

January 2014



## Philadelphia Section AIHA Newsletter

# January 2014 Breakfast Meeting “Ethical Decision Making Tools to Enhance Safety Culture”

The Philadelphia Section AIHA’s January breakfast meeting will be a presentation of the AIHA’s 2013 Ethics Webinar, “Ethical Decision Making Tools to Enhance Safety Culture”.

This event will be held on Wednesday, January 22nd at Saint-Gobain CertainTeed’s Research and Development Center (Blue Bell, PA).

Health and safety programs function largely in the realm of prevention – on a good day “nothing happens”. But as a profession, we often don’t discuss the tension that arises between our loyalties to our clients (the workers) and to upper management (our employers). In this webinar, we will describe the link between safety culture and managing conflict in dual loyalty settings, and we will equip you with tools to reestablish trust and to make positive changes in your organization.

Upon completion, participants will be able to:

- Define ethics
- Cite the elements of the ABIH and BCSP codes of ethics
- Discuss dual loyalty
- Explain safety culture
- Present examples of ethical decision making tools

Participation in this webinar rebroadcast meets ABIH Ethics CM requirements (please see note regarding process for awarding webinar CM credit).

# Philadelphia Section AIHA

## January 2014 Breakfast Meeting

### *“Ethical Decision Making Tools to Enhance Safety Culture”*

Wednesday, January 22nd, 2014  
Saint-Gobain CertainTeed R&D Center  
1400 Union Meeting Rd, Blue Bell, PA 19422

#### Agenda

8:00 AM - 8:30 AM	Registration/Networking/Continental Breakfast
9:00 AM - 9:15 AM	Opening Remarks
9:15 AM - 11:15 AM	Webinar Replay

Cost: Local Section Members\*: **\$25**  
Non-Members: **\$35**

\*- to take advantage of the discounted member rate, you must be a current dues-paying member of the Local Section.

**Payment for and attendance at this meeting does NOT automatically award ABIH CM credit hours.** This AIHA TeleWeb is ABIH approved for 2.0 IH certification maintenance (CM) credit hours. AIHA's Distance Learning Program requires any participant seeking CM credit hours to pay a \$35 processing fee (for records retention and Education Transcript update), and to submit a course evaluation. The \$35 processing fee is **not** included in the price for this meeting.

Payment for this course, which covers the costs of the breakfast and webinar, **MUST** be made at the door on the day of the event. No advance payments will be accepted. Payment must be made via cash or check **ONLY** (no credit cards or PO's will be accepted, and we cannot invoice for the course fee).

**Due to an expected high turnout for this meeting, and limited seating, pre-registration for this meeting is required, and we will not be able to accommodate any walk-in attendees. Pre-registration will close, without notice, when all seats have been filled.**

To pre-register, please send an email with your name and company affiliation to [register@philaaaha.com](mailto:register@philaaaha.com) before Noon on Wednesday, January 15th

## Directions to Saint-Gobain CertainTeed R&D Center

(1400 Union Meeting Road, Blue Bell, PA)

Saint-Gobain CertainTeed is located at the intersection of Union Meeting and Jolly Roads (there is a sign for Siemens at the intersection; there is a sign for 1400 UMR at the UMR entrance to the parking lot).

Saint-Gobain CertainTeed is located in a large building shared with several other companies. There are entrances to the parking lot for the building from both Union Meeting Road and Jolly Road (Jolly Road is shown as Arbor Way on the photo of the site below). See the photo below for the location of the entrances and where to park and enter the building). The entrance for Saint-Gobain CertainTeed is located at the end of a long walkway (you'll go down several steps to the walkway to the entrance doors). Once inside, go to the left and look for the visitor's lobby/reception area a short distance ahead on your right. Someone will be there to sign everyone in and to take you to the conference room.

### **From Route 309, Fort Washington:**

Take Fort Washington exit. Go straight on Pennsylvania Avenue (stay to the left) to Bethlehem Pike, left on Bethlehem Pike. Take the first right, this will become Joshua Road, to Route 73. Right onto Route 73, to Union Meeting Road, left onto Union Meeting Road.

### **From Route 202:**

Take Route 202 to the intersection of Route 73. From 202 South, turn left. From 202 North, turn right onto Route 73/Skipack Pike to Union Meeting Road. Turn right onto Union Meeting Road.

### **From King of Prussia:**

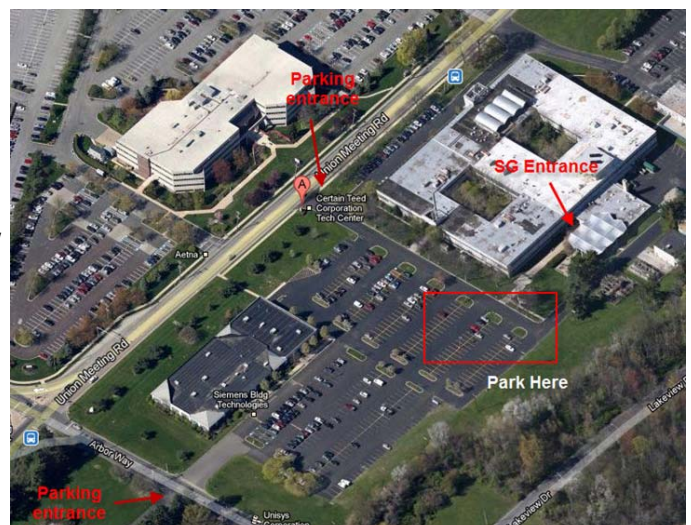
Take Renaissance Boulevard toward Swedland Road/PA-320. Turn right onto Swedland Rd/PA-320. Follow PA-320 to the I-76 East merge. Merge onto I-76 East. Follow I-76 E, take the I-476/PA-23 exit toward Plymouth Meeting. Take the Germantown Pike West exit toward I-276 W/Pennsylvania Turnpike West. Turn slight right onto Jolly Road. Turn right onto E Township Line Road. Turn left onto Union Meeting Road.

### **From Philadelphia:**

Take Schuylkill Expressway (Route I-76 West) to Route I-476 North (Blue Route) toward Plymouth Meeting. I-476 North to exit 9 Germantown Pike West (422). Go past the Plymouth Meeting Mall on your right, approximately three lights to Walton Road. Turn right onto Walton Road to the 2nd light (Township Line Road); turn left onto Township Line Road. Follow Township Line Road to the 2nd light (Union Meeting Road); turn right onto Union Meeting Road. Follow Union Meeting Road to the top of the hill (Jolly Road).

### **From the Turnpike:**

Take exit 25 (Norristown). Left off ramp. Go west on Route 422, Germantown Pike. Go past the Plymouth Meeting Mall on your right, approximately three lights to Walton Road. Turn right onto Walton Road to the 2nd light (Township Line Road); turn left onto Township Line Road. Follow Township Line Road to the 2nd light (Union Meeting Road); turn right onto Union Meeting Road. Follow Union Meeting Road to the top of the hill (Jolly Road).



## Teleweb Presenter Bios

**Dr. Robert Emery** is the Vice President for Safety, Health, Environment and Risk Management at the University of Texas Health Science Center at Houston and Professor of Occupational Health at the University of Texas School of Public Health. He has over 30 years of experience in the profession and holds master's degrees in both health physics and environmental sciences and a doctorate in occupational health. Dr. Emery is the author of over 70 peer reviewed journal articles and book chapters; is the leading lecturer for the Southwest Center for Occupational and Environmental Health (SWCOEH); and makes frequent presentations at the local, state, national and international level.

**Dr. Janelle Rios** is the Director of Continuing Education for the Southwest Center for Occupational and Environmental Health. She has over 10 years of experience in environmental health and has recently expanded her area of expertise to include ethical issues in dual loyalty settings. Dr. Rios is developing an online course in which she describes simple tools for ethical decision making.

# AIHce2014 + STEWARDSHIP

May 31 – June 5 + San Antonio, Texas  
*Evolution & Journey to a Safer Tomorrow*

Registration will soon open for AIHce 2014 in San Antonio.  
For more information, please visit [aihce2014.org](http://aihce2014.org).



**PHILADELPHIA SECTION AIHA**  
**PO Box 126 • ROYERSFORD, PA 19468**  
**[MAIL@PHILAAIHA.COM](mailto:MAIL@PHILAAIHA.COM)**